

PACIFIC

Real Estate Services, Inc.

COMMERCIAL INVESTMENT REAL ESTATE

Pacific Real Estate Services

859 Willamette Street, Suite 270
Eugene, OR 97401

(541) 687-1434 Phone

Marketing@PacificRealEstateServices.com

www.PacificRealEstateServices.com

THE PARK PLACE BUILDING

859 Willamette Street
Downtown—Eugene

The Park Place Building is a pleasing blend of historic architectural styles enveloped in a modern office shell.

Comprised of nearly 62,000 square feet, the building offers a range of office and retail fronting both Willamette Street and the Park Blocks.

An appealing use of materials with distinctive ground level facades creates an attract setting for retail and office.

OFFICE SPACE AVAILABLE

1,331 Square Feet, Suite 280

3,084 Square Feet, Suite 250

OFFICE or RETAIL AVAILABLE

1,407 Square Feet, 868 W. Park

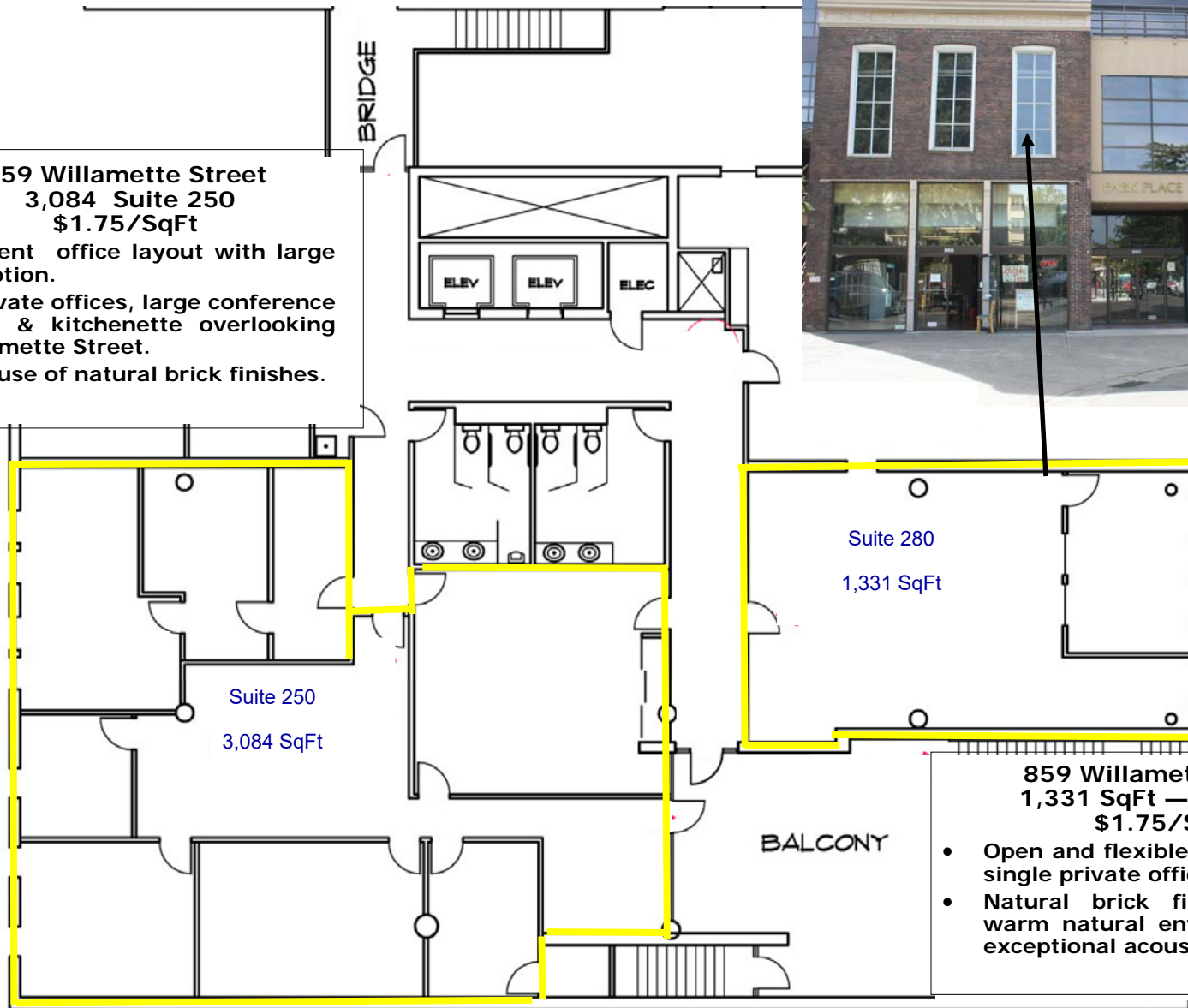
Rate: \$1.75 per SqFt



HIGH-SPEED FIBER AVAILABLE NOW!

**859 Willamette Street
3,084 Suite 250
\$1.75/SqFt**

- Efficient office layout with large reception.
- 7 Private offices, large conference room & kitchenette overlooking Willamette Street.
- Nice use of natural brick finishes.



Suite 280
1,331 SqFt

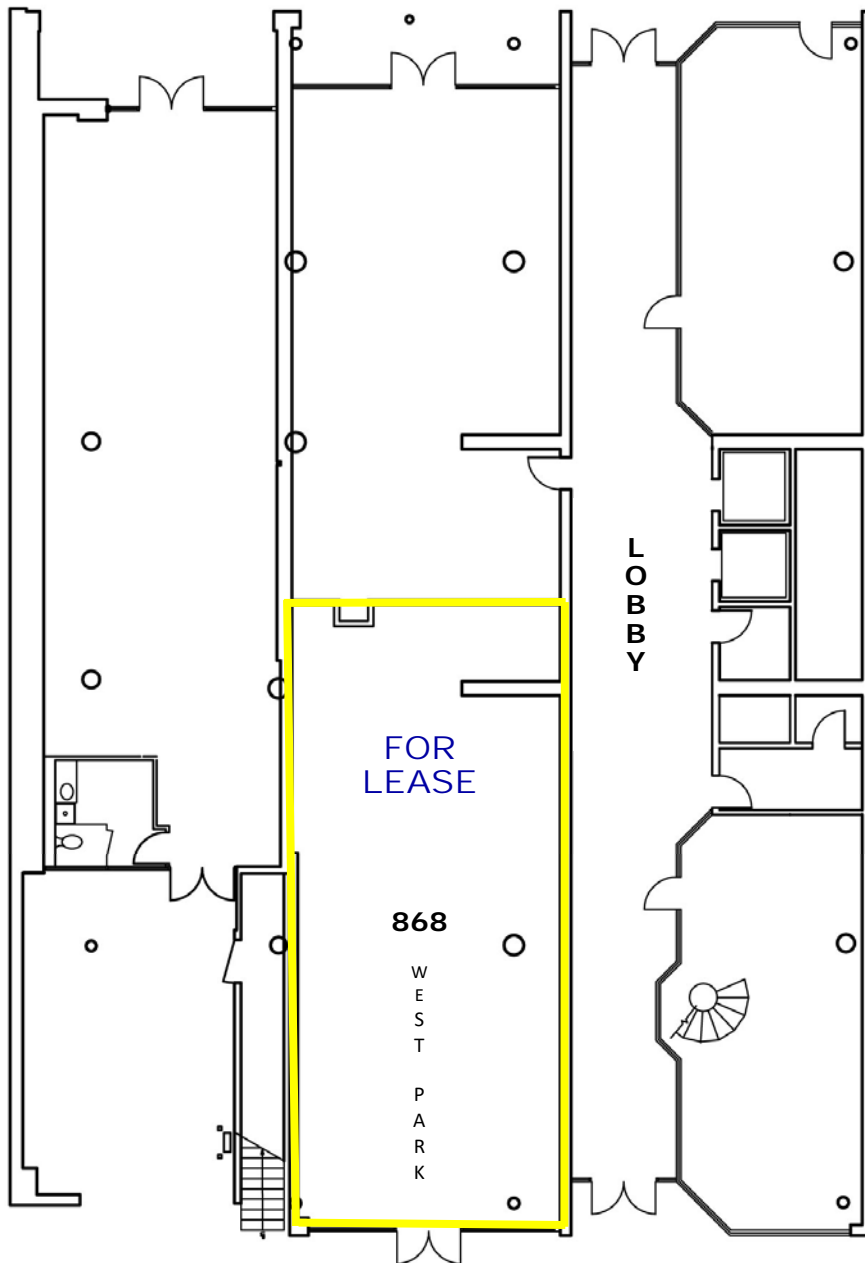
**859 Willamette Street
1,331 SqFt — Suite 280
\$1.75/Sqft**

- Open and flexible floor plan with single private office.
- Natural brick finishes creates warm natural environment with exceptional acoustic qualities.

PACIFIC

Real Estate Services, Inc.

COMMERCIAL INVESTMENT REAL ESTATE



**Ground Floor
Office or Retail**
868 West Park Street
1,407 Square Feet

Ground Level space suitable for Office or Retail or an opportunity for food service. Great exposure with large display windows along the entire frontage. Formerly in use as commercial kitchen with some rough-ins in place and a Type II hood.

Frontage on West-Park with ample on-street parking.

Rate \$1.75 per square foot
plus utilities.